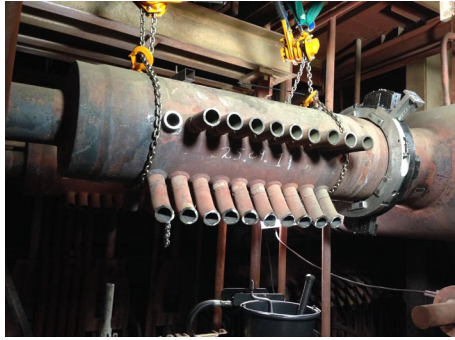


Mobile Machining - Power Plants



We are a committed and highly experienced team within our field, and we are ready to make a difference for YOUR business. We have many years of experience with mobile machining and have developed a large selection of special designed machines for in-situ work. Call us at +45 70 110 270 for more information.

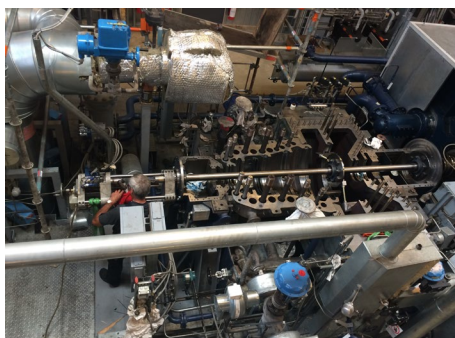
Our competences within mobile machining includes:

- Flange Facing up to a diameter of 20.000 mm.
- Line boring from $\varnothing 40$ -1200, length from 100-5.000 mm.
- Drilling/Line-Boring of bearing fit
- Plain milling
- Drilling and thread cutting
- Surface grinding and milling
- Tube cut from 4"-80"
- Tube sharpening from 4"-80"
- Bolt tightening (tension)
- Turning of bearing surface for tube seam
- Laser alignment
- Customized solutions according to customer specifications
- Consulting in regard to processing possibilities

See more at www.cnconsite.dk

List of reference:

B&W
Studstrupværket
Avedøre værket
Sakskøbing kraftvarmeværk
Østkraft
Århus affaldsforbrænding
Skive Fjernvarme
Ørsted
Alstom Power
Wicotech
Energinet
Siemens Energy



*We make the
complicated simple,
because we can.*

CNC
ON SITE

CNC Onsite A/S
Storhaven 4, DK-7100 Vejle
tlf. +45 70 11 02 70
www.cnconsite.dk